



GODREJ WOODS

THANISANDRA, BENGALURU



Welcome to a fabulous life.



Fabulous rewards we've received in recent years.

Godrej Properties has received over 400 prestigious awards & recognitions in recent years.



NATIONAL BRAND LEADERS
Track2Realty BrandXReport, 2019-20

WEALTH CREATOR
Among The Next 500 Companies
Fortune India

PORTER PRIZE
For Leveraging Unique Activities Porter Prize,
2019

REAL ESTATE COMPANY OF THE YEAR
Construction Week Awards, 2019

GRESB
(Global Real Estate Sustainability Benchmark)
Ranked 2nd in Asia and 5th globally
by GRESB

INDIA'S TOP BUILDERS
Construction World Architect and
Builder (CWAB) Awards, 2018



A fabulous future built by India's No. 1 real estate developer.

Experience the assurance of owning a home crafted by India's most trusted developer. With a fabulous track record of landmark creations, every detail is designed to exceed expectations and enrich your everyday.



Actual Image of Godrej One

As per the booking value achieved in FY 2023-24, reported until May 3, 2024, T&C Apply



A fabulous address among icons.

From one celebrated address to the next, Godrej Properties has woven a legacy through North Bengaluru. This time, the story unfolds amidst nature, where life takes on its most fabulous shade.



GODREJ WOODSCAPES

WHITEFIELD – BUDIGERE CROSS

PRM/KA/RERA/1251/446/PR/170524/006882
PRM/KA/RERA/1251/446/PR/170524/006888



GODREJ LAKESIDE ORCHARD

SARJAPUR ROAD - BANGALORE

PRM/KA/RERA/1251/446/PR/300924/007105



GODREJ MADISON AVENUE

KOKAPET - HYDERABAD

P02400009227; HMDA no: 011134/BP/HMDA/2919/SKP/2024



GODREJ MSR CITY

NEAR AIRPORT TOLL - DEVANAHALLI

PRM/KA/RERA/1251/AG/211203/002664

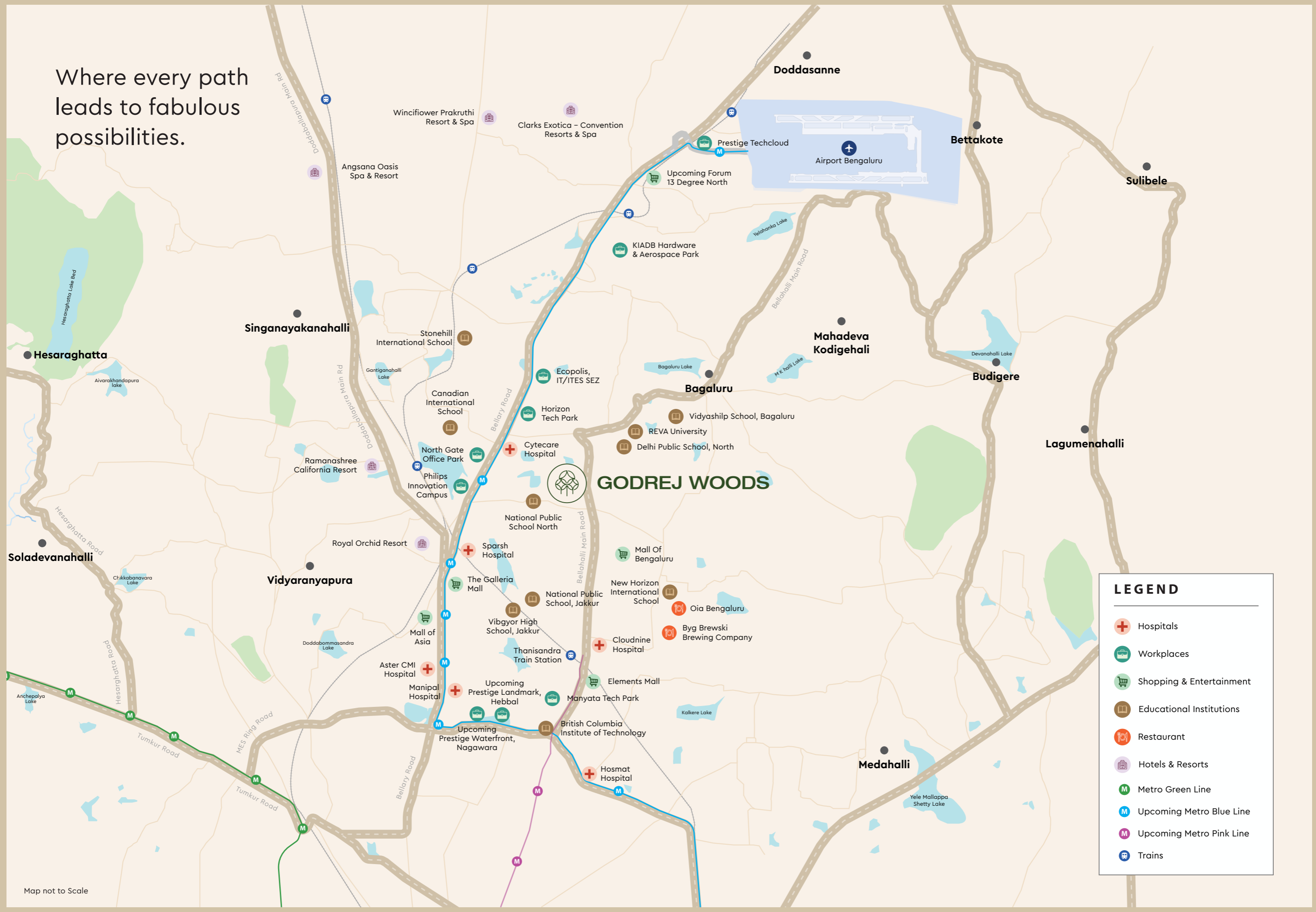


The city has seen it all. But this is fabulous even by Bengaluru's standards.

The city's pulse is shifting North, and we're loving it. A metro line zipping straight to the airport, a 10,000 acre-industrial township promising a million jobs, and an aerospace park soaring into new frontiers. This side of Bengaluru is gearing up for something fabulous. It has the energy of a vibrant city, where progress and leisure come together, and every street has a fabulous experience waiting for you.



Where every path leads to fabulous possibilities.



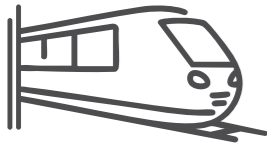
LEGEND

- Hospitals
- Workplaces
- Shopping & Entertainment
- Educational Institutions
- Restaurant
- Hotels & Resorts
- Metro Green Line
- Upcoming Metro Blue Line
- Upcoming Metro Pink Line
- Trains

Map not to Scale

A life connected to all the fabulous places in the city and beyond.

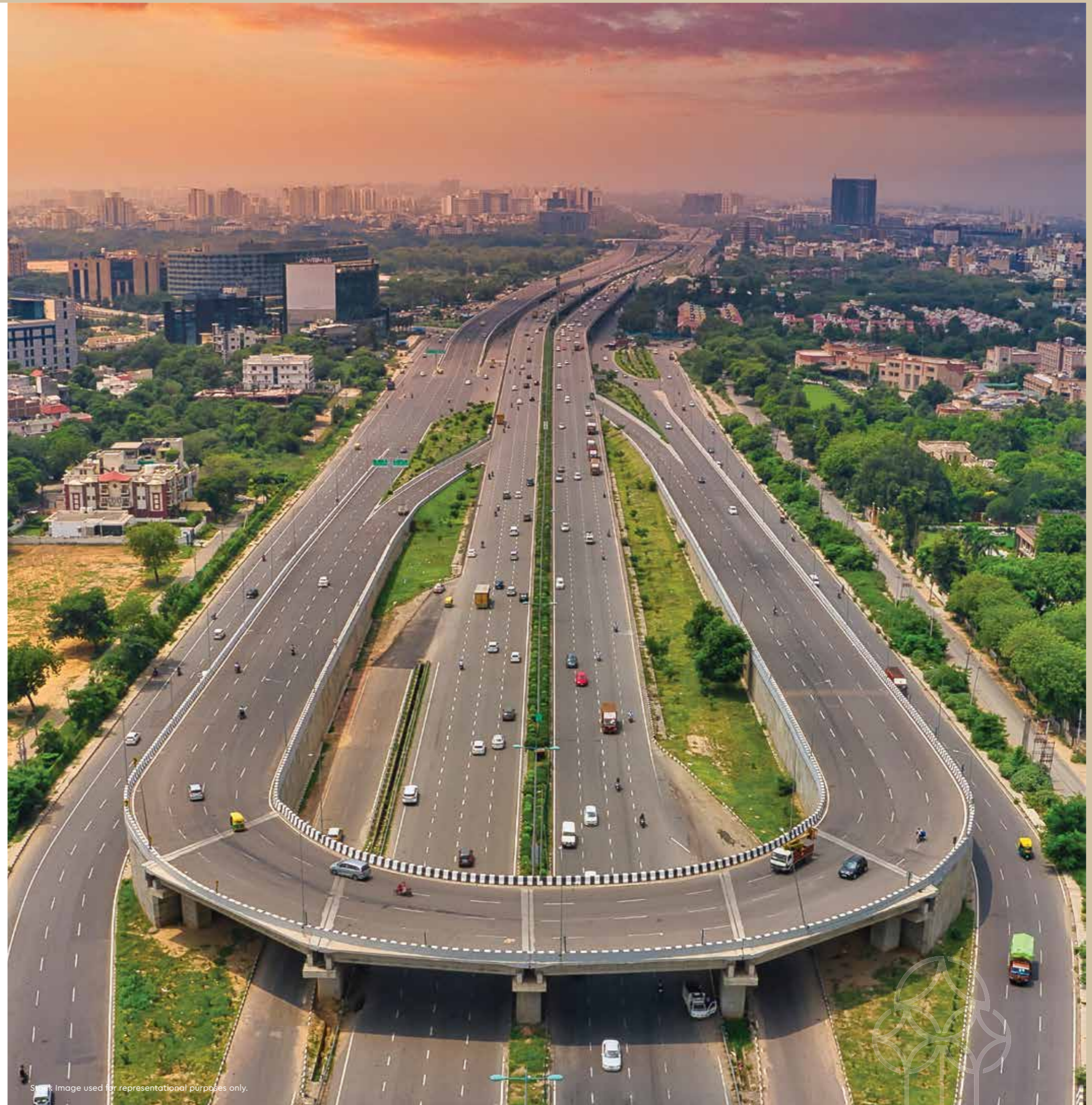
Bring the best of Bengaluru closer to you with robust connectivity that ensures you're never too far. Be it via road, rail, air or metro, travel seamlessly across the city and beyond so you never miss out on a fabulous and well-connected life.



Connectivity

Upcoming Metro Station	10 minutes
BIAL	15 minutes
Hebbal Flyover	15 minutes
Yelahanka Railway Station	15 minutes

Distance as per google maps



Your little ones' fabulous futures begin here.

Give your children the advantage of premier education just minutes from home. Here, fabulous learning opportunities grow alongside a safe and nurturing environment that is just minutes away from your forest-inspired home.



Educational Institutes

REVA University	2 minutes
EuroSchool North Campus	6 minutes
Delhi Public School	7 minutes
Canadian International School	10 minutes
Mallya Aditi	12 minutes
CMR University	12 minutes
Stonehill International School	18 minutes
Vidyashilp University	22 minutes



Work close to your abode
as you live fabulously.

Stay connected to major business districts and enjoy
the fabulous balance of returning each evening
to a forest setting that melts away the day's stress.



IT & Tech Parks

Bhartiya Centre of Information Technology	7 minutes
Manyata Tech Park	12 minutes
L&T Tech Park	12 minutes
KIADB Aerospace Park	15 minutes
Kirloskar Business Park	18 minutes

Distance as per google maps



Stock Image used for representational purposes only.



Where every plan becomes a fabulous experience.

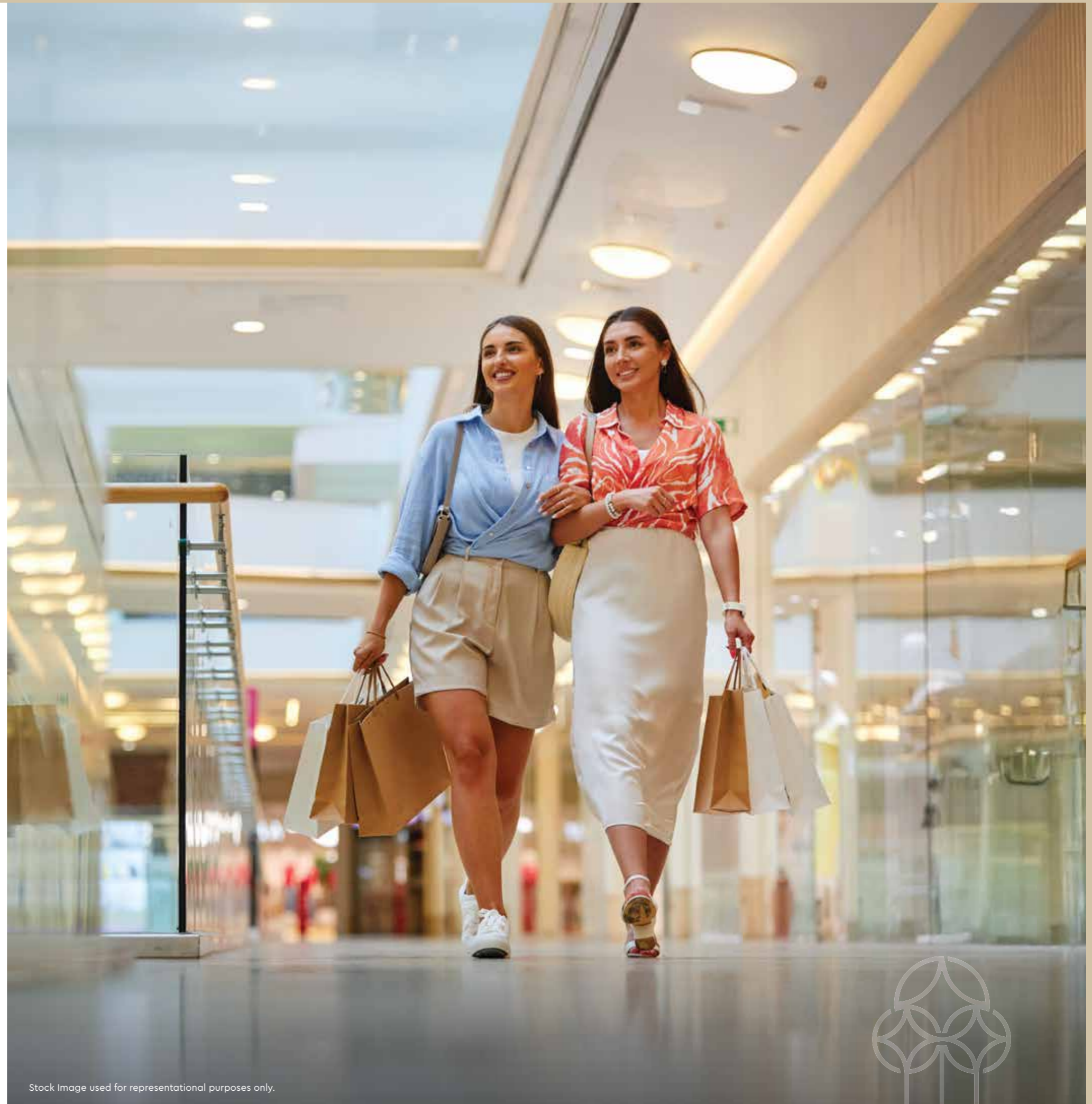
Discover spaces where every corner is packed with flavour, fun and entertainment, because life's best moments deserve a fabulous backdrop.



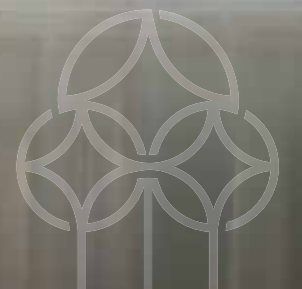
Entertainment & Leisure

Farmlore	3 minutes
Bhartiya Mall Of Bengaluru	8 minutes
Oia	10 minutes
Byg Brewski	12 minutes
Elements Mall	12 minutes
Decathlon	12 minutes
The Galleria Mall	14 minutes
Phoenix Mall Of Asia	15 minutes
Padukone-Dravid Centre For Sports Excellence	18 minutes

Distance as per google maps



Stock Image used for representational purposes only.



Fabulous peace of mind that comes with quality healthcare.

World-class hospitals and healthcare centres are just a heartbeat away, while the calming greens of your abode create a fabulous backdrop for wellness and recovery.



Healthcare

Cytecure Hospital	7 minutes
Sparsh Hospital Yelahanka	9 minutes
Cratis Hospital	16 minutes
Aster CMI Hospital	16 minutes
Manipal Hospital, Hebbal	30 minutes

Distance as per google maps



Stock Image used for representational purposes only.

WELCOME TO



GODREJ WOODS

A fabulous forest reserves your spots for play, pause, and peace.

Welcome to your very own forest where the most fabulous experiences await you and your loved ones, every day. Spend every day in the shade of lush greens as a forest makes every moment joyful.

With a host of forest living experiences, water features, sports, leisure, and amenities for work, your home at Godrej Woods always has something for you to look forward to.





Artist's impression. Not an actual site image.

2040+ SQ. MT. OF CENTRAL GREENS



Soak in the fabulous calm
as expansive greens surround you.

KIDS' CENTRIC AMENITIES



A happy hub of kid-friendly amenities
where your little ones can learn,
explore and grow.

1650+ SQ. MT. OF GRAND CLUBHOUSE



Indulge in fabulous moments
of leisure and luxury.

EXPANSIVE BALCONIES



Enjoy fabulous views from
sunrise to starlight from your home.





Artist's impression. Not an actual site image.



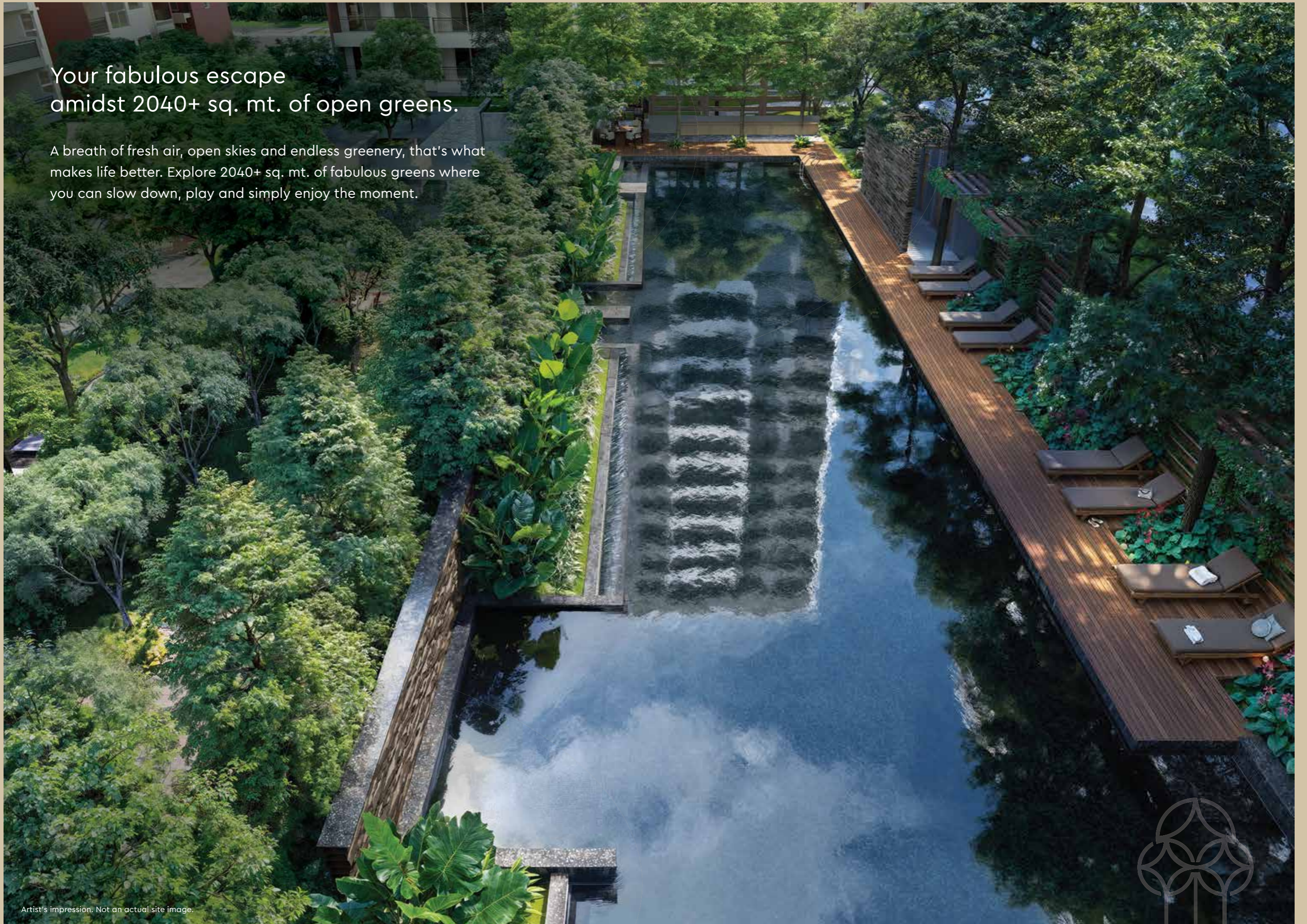


Come home to fabulous amenities,
every single day.

This is where spaces, experiences and moments come together
to create a life that's as fabulous as you deserve.

Your fabulous escape
amidst 2040+ sq. mt. of open greens.

A breath of fresh air, open skies and endless greenery, that's what makes life better. Explore 2040+ sq. mt. of fabulous greens where you can slow down, play and simply enjoy the moment.



Artist's impression. Not an actual site image.





Artist's impression. Not an actual site image.

Lap Pool



Stock Image used for representational purposes only.

Pickleball Court



Artist's impression. Not an actual site image.

Party Deck



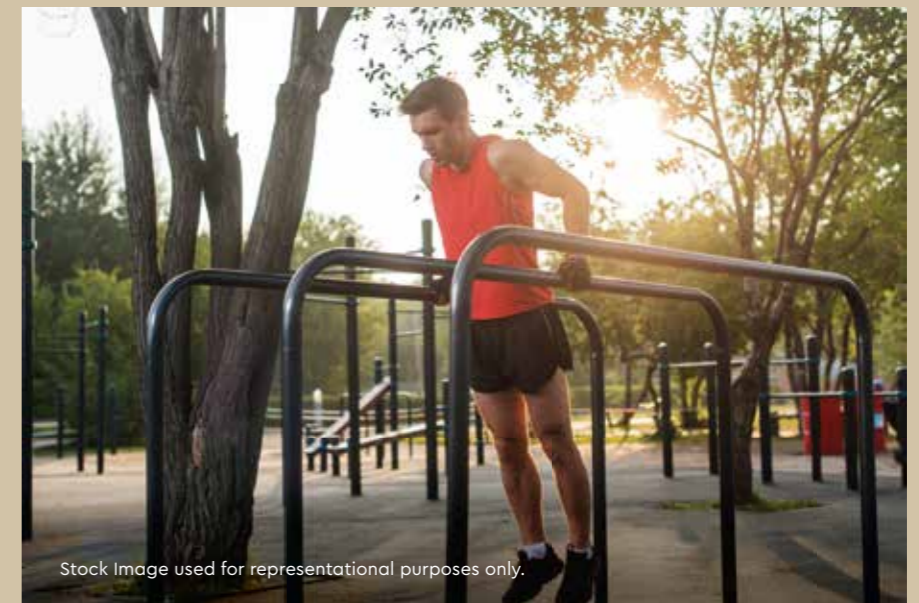
Stock Image used for representational purposes only.

Cabana With Deck Chairs



Stock Image used for representational purposes only.

Barbeque Pavilion



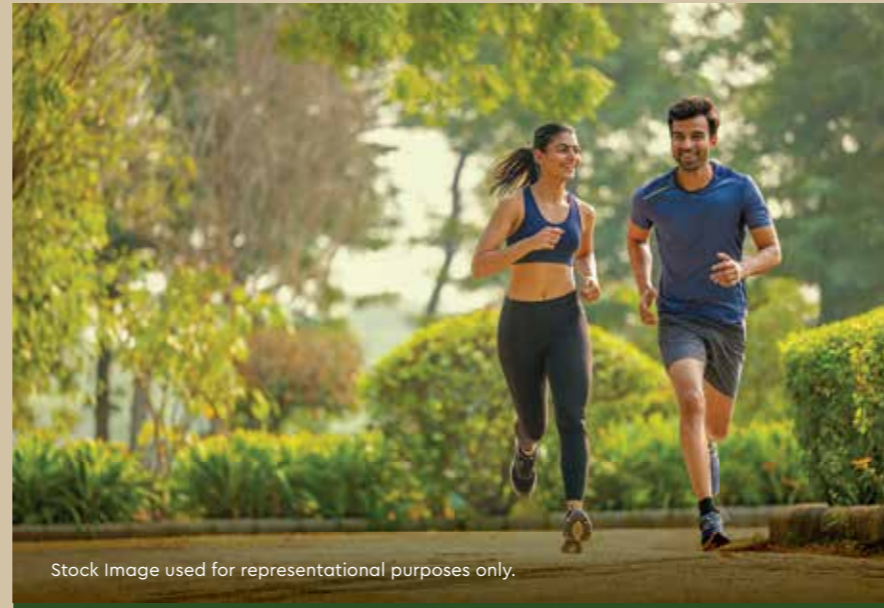
Stock Image used for representational purposes only.

Outdoor Gym



Stock Image used for representational purposes only.

Multipurpose Court Spillover Lawns



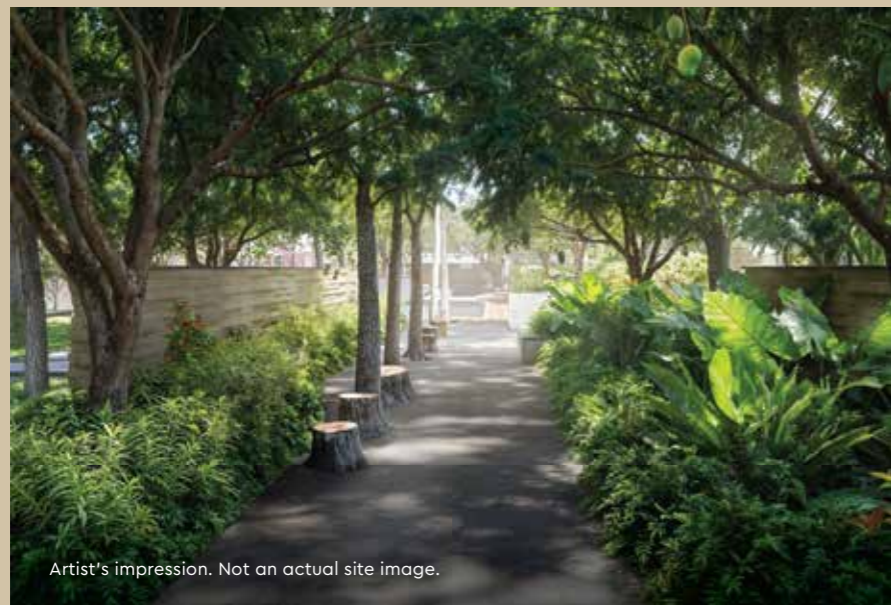
Stock Image used for representational purposes only.

Jogging Track / Cycle Path



Artist's impression. Not an actual site image.

Meditation / Yoga Deck



Artist's impression. Not an actual site image.

Wooded Walkway



Stock Image used for representational purposes only.

Leisure Seating



Artist's impression. Not an actual site image.

Basket Hammocks Leisure Seating

A place where playtime
turns into unforgettable adventures.

Our kids' play area is more than just swings and slides.
It's a fabulous space for children to explore, play and
enjoy the magic of childhood every day.





Stock Image used for representational purposes only.

Kids' Jungle Gym



Stock Image used for representational purposes only.

Tree House



Artist's Impression. Not an actual site image.

Kids' Play Lawn With Slides



Stock Image used for representational purposes only.

Kids' Play Pond



Stock Image used for representational purposes only.

Crèche

A fabulous clubhouse at the heart of your forest-inspired life

Whether you're hosting, relaxing or recharging, the clubhouse is sure to become your everyday escape. With elegant lounges, a fully equipped gym, wellness amenities and spaces that are perfect to rejuvenate you, a fabulous future is waiting to indulge you.





Artist's impression. Not an actual site image.

Multipurpose Hall / Half Basketball Court



Stock Image used for representational purposes only.

Paddle Ball



Artist's impression. Not an actual site image.

Gymnasium



Stock Image used for representational purposes only.

Badminton



Stock Image used for representational purposes only.

Squash



Stock Image used for representational purposes only.

Indoor Games



Artist's impression. Not an actual site image.

Table Tennis



Stock Image used for representational purposes only.

Yoga / Aerobics / Dance / Music



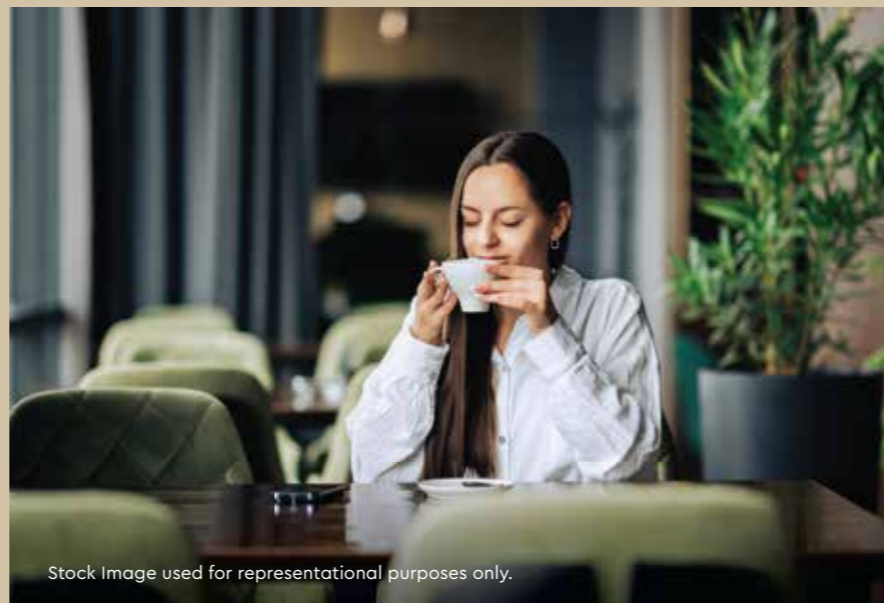
Artist's impression. Not an actual site image.

Salon / Spa



Stock Image used for representational purposes only.

Mini Theatre



Stock Image used for representational purposes only.

Café & Bakery



Stock Image used for representational purposes only.

Outdoor Co-working

Expansive balconies that open up
to fabulous sunsets and gentle breezes.

Step out onto your fabulous balcony and let the world slow down.
Enjoy life's simple pleasures as you take in the fresh air, open skies
and a view that stretches beyond.





Artist's impression. Not an actual site image.

A fabulous design,
rooted in hues of green.

LANDSCAPE OUTDOOR AMENITIES

1. Lap Pool	11. Basket Hammocks Leisure Seating
2. Kids' Play Pond	12. Kids' Play Lawn With Slides
3. Party Deck	13. Multipurpose Court Spillover Lawns
4. Cabana With Deck Chairs	14. Interactive Seating Area (Near Crèche)
5. Barbeque Pavilion	15. Kitchen Garden
6. Kids' Jungle Gym	16. Jogging Track
7. Tree House	17. Outdoor Gym
8. Meditation / Yoga Deck	18. Pickleball Court
9. Wooded Walkway	19. Pet Park
10. Leisure Seating	

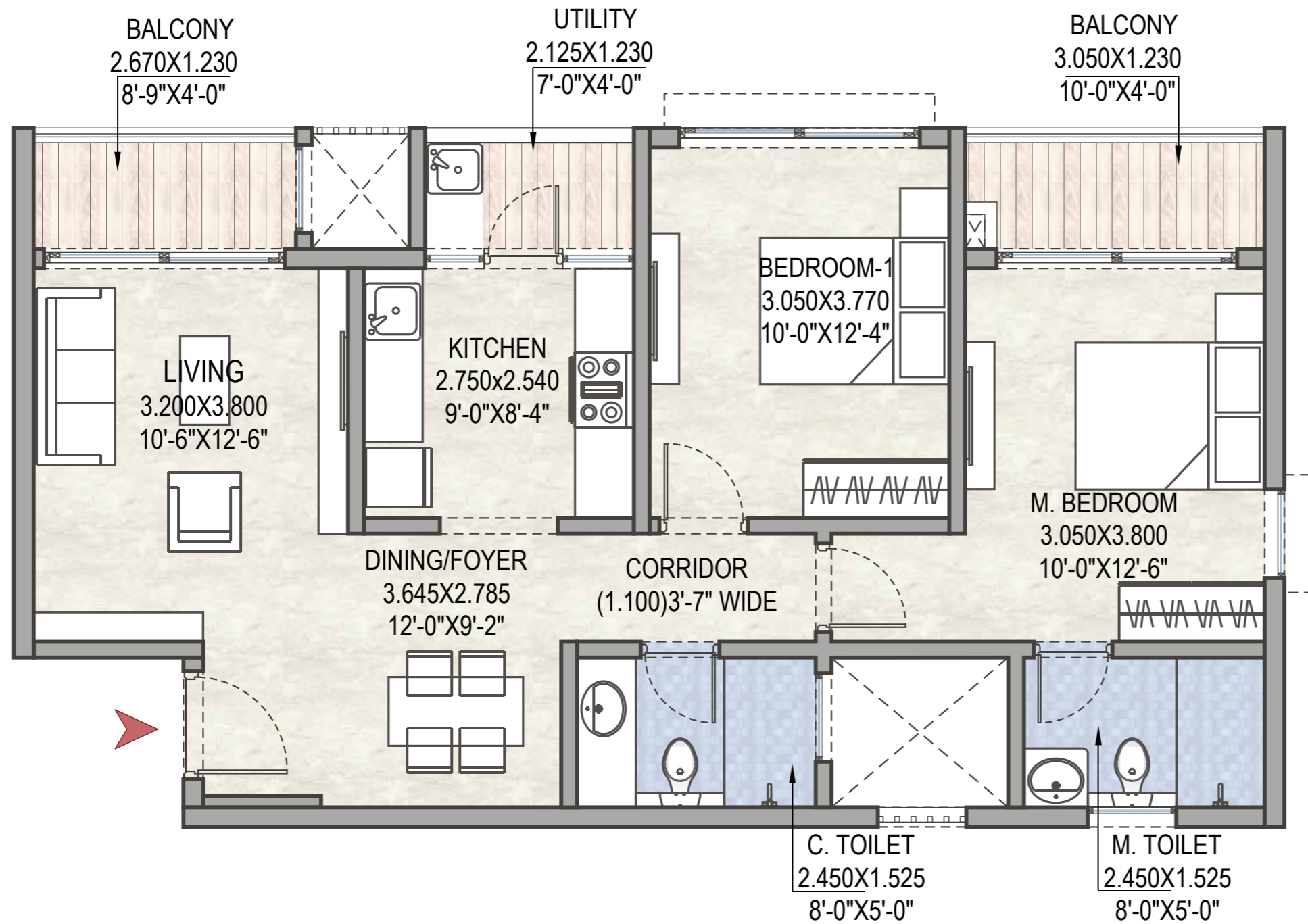
CLUBHOUSE AMENITIES

1. Multipurpose Hall / Half Basketball Court	11. Café & Bakery
2. MPH – Pantry	12. Crèche
3. Gymnasium	13. Paddle Ball
4. Badminton	14. Outdoor Co-working
5. Squash	15. Terrace Pantry
6. Indoor Games	
7. Table Tennis	
8. Yoga / Aerobics / Dance / Music	
9. Salon / Spa	
10. Mini Theatre	





UNIT PLAN

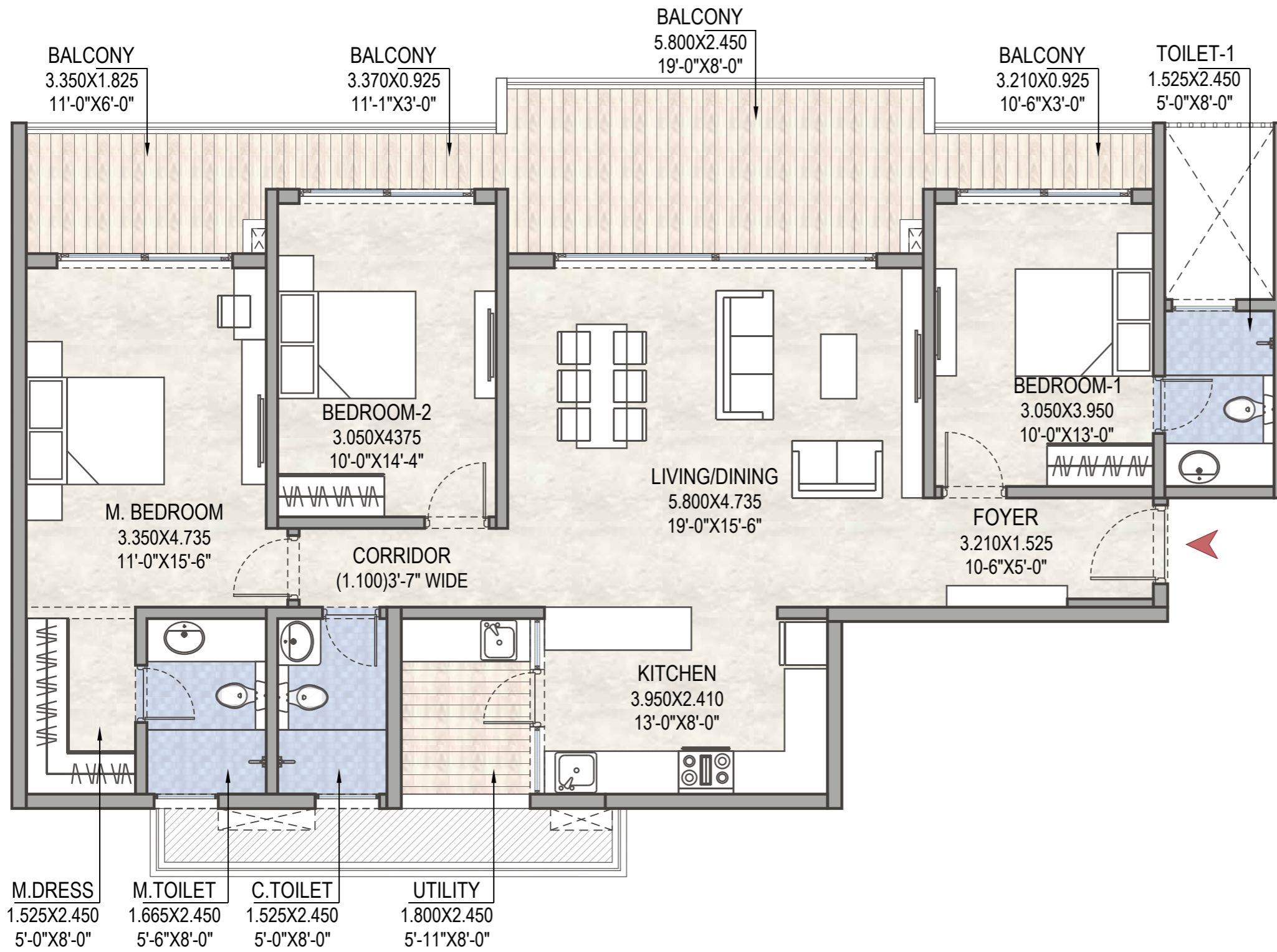


2 BHK	(Sq. Mt.)	(Sq. Ft.)
Carpet Area	66.81	719.17
Balcony Area	7.04	75.72
Utility Area	2.61	28.13
Saleable Area	110.87	1193.38



GODREJ WOODS

THANISANDRA, BENGALURU

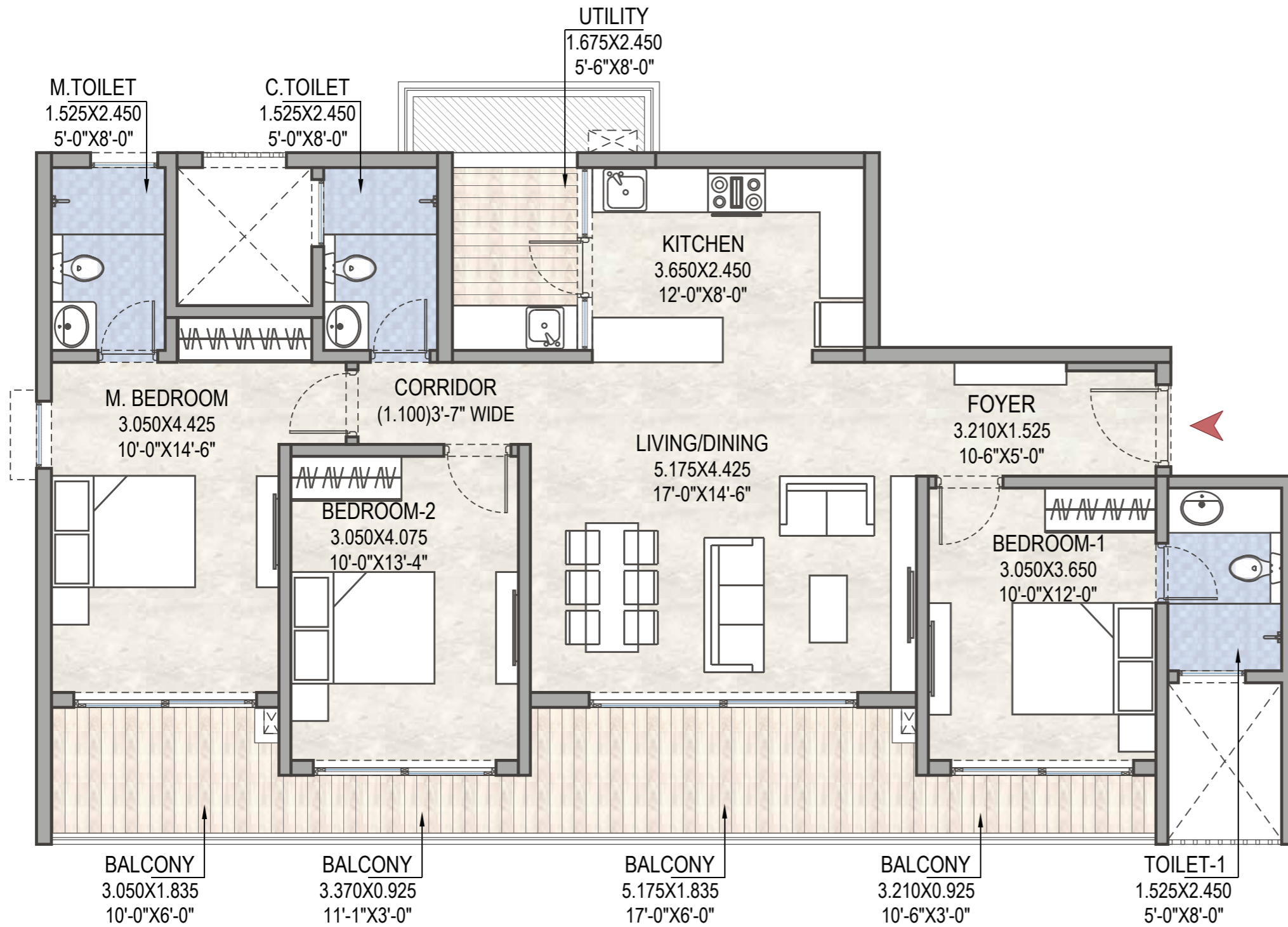


3 BHK Lux	(Sq. Mt.)	(Sq. Ft.)
Carpet Area	109.04	1173.66
Balcony Area	26.60	286.29
Utility Area	4.77	51.33
Saleable Area	203.58	2191.36



GODREJ WOODS

THANISANDRA, BENGALURU



3 BHK Premium	(Sq. Mt.)	(Sq. Ft.)
Carpet Area	95.34	1026.26
Balcony Area	21.18	227.96
Utility Area	4.44	47.77
Saleable Area	175.39	1887.88





The Project is registered as " GODREJ WOODS " with Karnataka RERA bearing Registration No. ACK/KA/RERA/1251/472/PR/071125/009755 at <https://rera.karnataka.gov.in/> This Project is being developed by Godrej Properties Limited. Site Address: GODREJ WOODS, KHATHA NO. 323/106/9&10, E PID NO. 2254233335, SY NO 106/9 & 106/10, Kogilu Village, Yelahanka Hobli, Yelahanka, Bengaluru Urban, Karnataka – 560064.

The images contains artist's impressions. No warranty is expressly or impliedly given that the completed development will comply in any degree with such artist's impression as depicted. The sale is subject to terms of application form & agreement for sale. All specifications of the unit shall be as per the sale agreement between the parties. *The prices mentioned are an indicative agreement value. Stamp duty registration, GST & other charges over and above the agreement value. Customers are advised to apprise themselves of the necessary and relevant information of the project(s)/offer(s) prior to making any purchase decision. The official website of Godrej Properties Ltd. is www.godrejproperties.com. Please do not rely on the information provided on any other website. T&C apply